

# Gila Chapter

## Back Country Horsemen of New Mexico | MINUTES

---

Meeting date | 1/13/2016 6:00 PM | Meeting location GRMC Conference Room

Meeting called by	Doug Dexter	Attendees
Type of meeting	Monthly business meeting	Cathy Brett, Tom Conway, Cindi deCapiteau, Dixie Dexter, Doug Dexter, Joan Dewbre, Mike Dowd, Vicki Dowd, Gerry Engel, Barb Gorzycki, Jeanette Hamilton, Jean Hill, Denise Howell, Andrea Imler, Dave Imler, Nancy Imler, Mickey Lemon, Maureen McLeod, Mara Miles, Ted Miles, Kathleen Murch, Denise Powell, Fran Rawllins, Stan Rawllins, Cheryl Roth, Randy Roth, Edward Sanchez, Karla Watson, Ilene Wignall, Nat Williams, Laurie Wlosinski, Tim Wolcott, Pat Wolph
Note taker	Cindi deCapiteau	

### AGENDA TOPICS

---

Agenda topic *Getting Started* | Presenter *Doug Dexter*

Doug Dexter initiated the meeting promptly at 6:00 by firing a shot into the ceiling from his sidearm, which had the immediate effect of quieting the herd of horse-daffy GBCH members present (see list above). In the ensuing stunned silence, Doug asked the guests and new members to introduce themselves, which they did, revealing themselves as Tom Conway, Barb Gorzycki, Jeannete Hamilton, Denise Howell and Edward Sanchez.

---

Agenda topic *Education Segment* | Presenter *Cheryl Roth*

Cheryl Roth introduced the always funny and effervescent Clay Allred, DVM, of Arenas Valley Animal Hospital, who lugged various power tools and instruments of medieval torture to the front of the room for his presentation on equine dentistry.

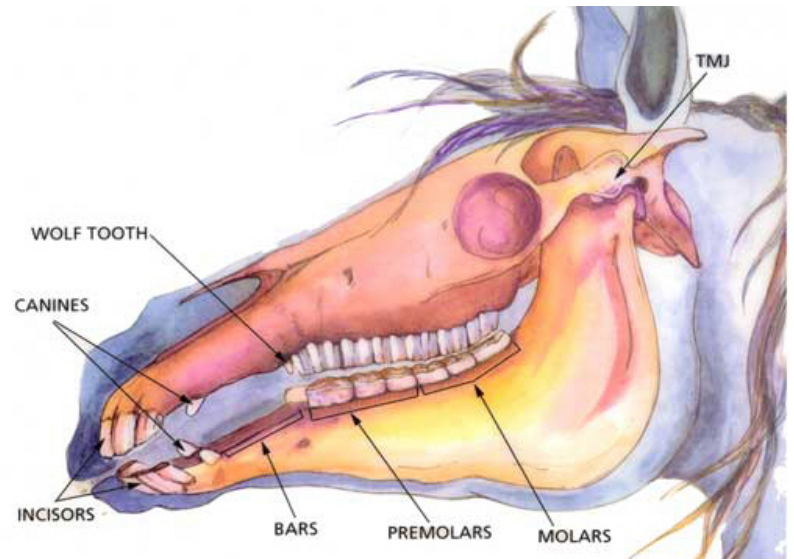
Dr. Allred noted that he has practiced veterinary art and science in the Silver City area for eight years after moving from Utah. Some lesser number of years ago, he purchased the Arenas Valley practice from John Wentzel, who still helps out at the clinic from time to time, along with Linda Lockler. Dr. Allred confessed to having a wife and four children. He warned that his presentation would be shot from the hip and he invited the group to ask questions at any time.

Dr. Allred also confessed to loving what he does 99% of the time, but expressed mild ambivalence about the remaining 1%, leaving the group to puzzle over what could possibly produce contradictory feelings in an occupation involving all creatures great and small.

Displaying an uncanny ability to prove that none of us ever really grows up, Dr. Allred noted that he teaches teenagers at his church and uses a technique that produced enthusiasm and delight among the so-called adults who attended tonight's meeting. He asked questions and tossed a candy bar to the person who gave the correct answer. He then elaborated on the answers

1. Within about eight days of birth, foals begin to develop their 26 baby teeth. Mature females usually have 36 teeth. Mature stallions and geldings can have 40 teeth.

2. Wolf and bridle teeth grow along the bars. Wolf teeth are on the top arcade, next to the molars. Another tooth farther to the front is the bridle tooth. Bridle teeth are also called canines and can occur on both the upper and lower arcades. Dr. Allred doesn't recommend pulling any of these, although some folks say they interfere with the bit, a claim about which Dr. Allred is unconvinced. Nobody knows for sure why horses have wolf teeth.

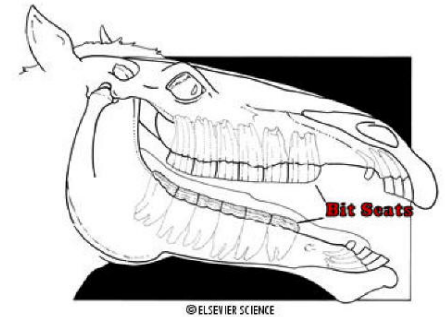


Images Courtesy of Thomas J. Johnson, DVM

3. Dentistry in horses is important because horses teeth wear unevenly. Horses grind food in a circular motion. This action can result in points and hooks, which are sharp protrusions that occur when teeth on the top and bottom do not meet perfectly. As soon as these abnormalities form, they can produce ulcers on the tongue and mouth. In addition, the grinding surface of the affected teeth is reduced, so the horse can't chew food thoroughly, which impairs the nutrients he is able to absorb. This pathology seems to be a problem mostly with human-kept horses and is not so common with ferals. The most important thing for a horse's teeth is to have a broad flat grinding surface.
4. Horses' teeth should be floated whenever needed, regardless of the horse's age. In practice, the age at which dentistry begins with horses depends on their discipline. Racehorses, for example, are started in dentistry at two years of age. Other disciplines don't begin quite so early. Younger horses have softer teeth, so they don't need so much dentistry. Realistically, horses' mouths shouldn't require a lot of dental attention until age 5-8. That said, horses' teeth should be floated when such care is needed. Owners and their veterinarians need to assess their horses' teeth regularly. If dental health is maintained at regular intervals, horses have fewer problems.
5. In a perfect world, depending on your use for horse or mule, you want to start at a relatively early age to keep an eye on his teeth and what's going on in his mouth. If a problem is detected at an early age, it's easier to fix. A small hook is easier to grind off than a big one—easier on the horse, your pocketbook, and practitioner. Six to eight years is a good time to start, based on observations of behavior under saddle. Proactiveness will assist far better than neglect. You can start younger if you want to and have your horse's mouth checked annually thereafter.
6. Minor dental work can be performed without sedation and without the use of a twitch.
7. Mules are less dentally needy than horses, but mules do require dentistry. Like horses, their dental health should be evaluated annually.
8. Equine dentistry is regulated in New Mexico, so only a licensed vet can practice dental care on horses. The law allows an equine dentist to practice, but only under the direct on site supervision of a vet. The reason is that a mouth in poor condition requires sedating the horse for treatment, as does the use of power tools. Only veterinarians are allowed to administer sedation to horses.
9. Chiropractic care is also supposed to be under direct supervision of a veterinarian (as well as equine massage and myofascial release).
10. You can do whatever you want to your own horse under New Mexico law. So you could float your own horse's teeth if you wanted to, but you can't help your neighbors.
11. Signs that dentistry is needed for a horse include quidding, slobbering, face rubbing, head shaking, weight loss, dropping grain (could also be a TMJ problem), and long stems in.

12. Healthy teeth are essential to a horse's pre-digestion. Pre-digestion itself is important because most of the absorption of nutrients occurs in a horse's hindgut. Food must be chomped up thoroughly before it gets to the hindgut because the foregut doesn't do much to break it down. So if not mechanically broken down by mastication, food isn't digested and goes to waste.

13. Bit seats are a dental practice some people insist on having for their horses, but Dr. Allred isn't convinced it's actually helpful. The bit sits in the horse's mouth across the toothless bars of the mouth, just in front of the back teeth. When the reins are pulled back, a small fold of cheek flesh can get trapped between the mouthpiece of the bit and the first back tooth. The painful pinching may result in the horse trying to avoid the pressure of the bit and cause several unwanted behaviors, like head tossing, so some people want to have a bit seat created in the horse's mouth. The bit seat is a rounded edge of the first upper and lower molars, so there are no sharp edges.



14. Infection and other conditions can cause tooth loss. When a tooth is missing, it's partner above or below the missing tooth has no opposition, so there's no mechanical action to keep the unopposed tooth flat and smooth. Sharp points result and can cause trauma and bone deformation. If no opposite tooth, eruption can be a problem. Points with no opposition will erupt in absence of pressure.



15. Horses' teeth erupt throughout life, but the process slows down as they age. Eruption does not occur at a consistent rate and depends on eating habits. Horses can become gummers.

16. Horses with dental problems are more likely to choke, and then they can't consume unsoaked pelleted feed. As they get older, horses don't grind as well, and as noted above, their metabolism doesn't help digestion. Once an older horse chokes, he is more likely to choke again.

17. Some horses develop hooks, points, and waves more than others. In particular, horses with TMJ problems do not chew evenly, so problems occur.



18. Tartar doesn't seem to be a problem for horses. The appearance of tarter, however, might indicate kidney problems, but it is rare in our area.

19. A cap on a horse's baby tooth occurs because a permanent tooth is erupting underneath and the baby tooth hasn't popped off. Sometimes, when a cap is firmly ensconced in the gum, a horse can develop an eruption bump in lower jaw because the cap doesn't want to release. It will go away eventually.

20. "Erupting" is the term used to describe the process in which teeth grow out of the gums and become visible in the mouth.

21. The implements of the equine dental trade include both hand and power tools. The files used to remove uneven wear are called "floats." The blade of a hand float cuts both ways, so the work of floating proceeds quickly. Floats are designed with angles that differ for the upper and lower arcades and help the practitioner address the backsides of the teeth. Hand floats convey a greater feel for the process than power tools do and they are unlikely to cause damage to teeth.

22. One way to check the condition of a horse's teeth is to lift their lips and take a look. Another way is to check the lateral mobility of the jaw. To check lateral mobility, you place one hand on the top of the horse's nose and the other hand on the bottom of his jaw. Then you pull the jaw from side to side. The action shouldn't take a hard pull and the horse should be comfortable with it. If you find a good range of motion in the front, you'll also have good motion in back where you can't see. Deformities of the teeth, especially hooks and ramps, will prevent lateral motion.

23. The best tool for examining a horse's mouth is the full-mouth speculum. The speculum fits like a bridle and places leverage plates in the horse's mouth, then ratchets the horse's mouth open wide. Floats can be used with the speculum in place.
24. Sometimes hand floats are not sufficient to get the job done, so power tools needed. Power floats have a carbide blade. Practitioners must be careful not to damage teeth with power tools. Good dentists can do a young horse in 3-4 minutes with power tools, but cooling and cleaning are needed to prevent the rapid build-up of heat and dental material. Sedation is needed because of noise.
25. The power tools employ different blades to address points and ramps and various other attachments, like a dremel for making bit seats.
26. A Canadian vet who specializes in dentistry designs attachments for Dewalt.
27. Expectations in the face of equine dental problems need to be balanced with reality. Some problems might take more than one visit to fix. The best strategy is to work at it slowly and rely on preventive care. Watch what the horse does and do what the horse needs.
28. Bad teeth can cause chronic diarrhea.
29. You can brush a horse's teeth, but it likely wouldn't make much difference in his overall dental health, except to clean out food impacted in spaces where teeth are missing.
30. Slow feeders should support equine dental health to some degree, especially if a horse takes a long time to work thru the feed. Slow feeders imitate foraging and the way a horse is supposed to live. Probably does help teeth, but not so much as being in the wild.
31. Yawning could be a sign of tooth problems if associated with TMJ pain, but Dr. Allred wouldn't say yes or no absolutely.
32. Horses probably experience tooth decay, but we don't see it until the tooth is gone. Some missing teeth are probably the result of cavities. So horses don't get cavities? Probably do, but not seen until tooth is gone. The way we are put together, lots of similarities with horses and humans, but some missing teeth are probably result of cavities..

---

*Agenda topic USFS Report | Presenter Amy Hartel*

Amy Hartel, a new GBCH member and employee of the US Forest Service, spoke briefly about trail priorities. Amy has been with the USFS in New Mexico for six months. She works with the Wilderness, Black Range, and Silver City districts to oversee various programs.

Amy advised that she has a short list of trail priorities for the Gila wilderness, but doesn't know about the needs of other districts.

# Heads up, sawyers!

Amy noted that J.R. Culkin is the only person in the area who can do first aid and CPR training, both of which are required for anybody who seeks chainsaw/cross-cut

saw certification. She asked for some dates when the Gila BCH chapter would like to have the training, to which Gerry Engel responded that he's looking at the end of January, first of February.

Gerry reported that he has distributed a proposed trail project schedule to the GBCH membership and agreed to email a list of project dates to Amy. He also noted that he needs to sit down with Amy and discuss the work needed.

---

**Action items**

**Person responsible**

Send trail project dates to Amy Hartel

Gerry Engel

Meet with Amy to discuss trail work needed

Gerry Engel

---

## Agenda topic *Minutes from November meeting*

Nobody had any changes to recommend for the November 2015 GBCH meeting, so Doug requested and received a motion to accept them as written. The motion carried on a noisy, apparently unanimous vote.

Tangentially, Doug urged everybody to send him their comments about the Christmas party—suggestions for improvements, likes, dislikes, etc.

---

## Agenda topic *Committee Reports*

**Financial:** According to Jean Hill, the chapter has lotsa money in the bank, the result of folks who forked over membership dues in December. See financial report on page 7.

**Membership:** Also according to Jean Hill, we had 40 members before this meeting started. Miraculously, we now have another 8 or 10 members (the miracle being that everybody fits into the GRMC conference room). Membership details appear at the bottom of the financial report on page 7.

### **Publicity:**

Mara Miles and Laurie Wlosinski will meet with Libby Beck (local mover and shaker in the Silver City art community) to discuss the idea of using an art auction to promote GBCH. (We touched on this proposal at the November 2015 meeting.) The idea is that GBCH partners with an art organization and shares in any proceeds. Vicki Dowd commented that the Silver City Art Association receives half the proceeds generated by the organization's Red Dot Art Weekends—but that might not be very much money. Promotion is expensive, Vicki mused. Mara responded that when she and Laurie meet with Libby, they will ask for an estimate of cost to GBCH and also ask for numbers on the earnings target. Timing might be a problem if the auction coincides with the NAN Ranch Ride. More information will be forthcoming at the February meeting.

In other publicity news, the flyer announcing the NAN Ranch Ride has been printed and will start showing up all over the place. Ted Miles will use his newspaper and magazine contacts to promote the ride.

**Community Service:** Gerry Engel has distributed proposed trail work schedule (included here on page 8). He noted that he deliberately hasn't scheduled any projects until after April because the NAN Ranch Ride will commandeer most of our attention.

Karla Watson asked for information about what's involved in trail work, to which Gerry responded that we use horses, but horses aren't required because people who hike can cut brush that impinges on the trail. Laurie Wlosinski added that people are needed to hold the horses.

Gerry commented that a possibility exists this year to get some moolah from the Forest Service to reimburse us for mileage and maybe other expenses. Gerry also mentioned that he hopes to complete a round of chainsaw and first aid certification in 2016.

A rally will be held on January 21 in Santa Fe in support of Public lands. Mileage reimbursement is available from the NM BCH. See details on page 11. (Gerry distributed this information by email on January 18, 2016.)

---

## Agenda topic *NAN Ranch Ride Update* | **Presenter** Vicki Dowd

Vicki Dowd reports that plans and operations for the NAN Ranch Ride are moving quickly now. Crews are out marking the trails for the ride. She has talked to editor of *Desert Exposure*, which will publish an article about the ride in February. The article will consist of two or three pages, using photographs provided by GBCH members and NATRC (North American Trail Ride Conference, which sanctions the NAN Ranch

Ride), and will give information about both the ride itself and the Back Country Horsemen. The advance notice provided by the article will give interested riders time to condition their horses.

Furthermore, ride entry forms will be all over the place in Silver City and Buckhorn by Friday, January 22.

Vicky passed out sets of liability waivers (separate waivers for the state of New Mexico, NATRC, and NAN Ranch), and stipulated that all volunteers serving the NAN Ranch Ride need to sign all three. For the NAN Ranch waiver, Vicki noted that everybody who enters the NAN Ranch property—whether volunteering or competing or just attending meal functions—must sign the NAN Ranch waiver. If you didn't sign your waivers at this meeting, please mail them to Ilene Wignall, 14 Quartz Drive, Silver City 88061.

Mickey advised that she needs volunteers to sign up to make breakfast casseroles (the original plan to serve breakfast burritos has changed). We need 20 casseroles to handle the two breakfasts. All 20 will be made from the same recipe. Mickey asked the volunteer cooks to furnish the ingredients out of our own pockets so that the GBCH won't be on the hook for that expense. Ilene Wignall added that disposable casserole dishes will be supplied so nobody has to use his or her own cookware.

---

### Action items

### Person responsible

Distribute ride entry forms

Vicki Dowd

Volunteer to cook a casserole

Everybody

---

### Agenda topic *Search and Rescue (SAR)* | Presenter *Laurie Wlosinski*

Laurie Wlosinski reported that the BCH mounted SAR contingent held their own at a successful training session in early December.

Looking around the GRMC conference room, where tonight's membership were sardined on all sides of the tables and up against the walls, Laurie mentioned that the Grant County SAR meets at the GRMC's emergency services headquarters (out next to 32<sup>nd</sup> Street, across the GRMC parking lot—you know, where the ambulances hang out). Laurie will inquire about allowing the GBCH to meet there.

---

### Action items

### Person responsible

Ask about possibility of GBCH using emergency services conference room

Laurie Wlosinski

---

### Agenda topic *Well Water Testing* | Presenter *Doug Dexter*

Residents of Grant County can get their well water tested for free, a remarkable benefit of living here since such testing customarily costs \$200. The procedure is that you pick up a kit from the Grant County Extension Office (2610 N. Silver St., 575-388-1559). Then you take a water sample directly from the well (not from a tap inside your house), and get the sample back to the extension office along with the GPS coordinates of the well.

**Bank Balance October 16, 2015 \$1,769.86**

Credits

10/16/15		\$ 14.00	50/50 October meeting
11/12/15		\$ 60.00	\$25 50/50 Nov mtg, 35 mmmbrship C/Mcl
11/15/15		\$ .23	interest

**Bank Balance November 15/16, 2015 \$1,844.09**

Credits

12/11/15		\$ 1,583.50	Xmas party (detail below)
12/15/15		\$ 100.00	Fran's \$ from Rend. sales
12/15/15		\$ .23	interest

Debits

11/16/15	#1289	\$ 25.00	Rmbrs FranStan state meeting
12/4/15		\$ 100.00	cash out for xmas party
12/6/15	#1291	VOID	wrong amt for 1293
12/8/15	#1292	\$ 300.00	Buckhorn for Xmas party
12/10/15	#1294	\$ 132.55	Rmbrs Dowd for Natrc flagging
12/10/15	#1293	\$ 29.14	Rmbrs Dowd Turkey Xmas party
12/14/15	#1295	\$ 31.89	Rmbrs Engel for gift

**Bank Balance December 15, 2015 \$2,909.24**

Transactions after December 15:

Credits

1/11/16		\$ 30.00	mmbrrship, Leclerc
---------	--	----------	--------------------

Debits

12/16/15	#1290	\$ 19.23	Rmbrs Lemons Ham Xmas party
12/23/15	#1296	\$ 100.00	BCH State, sales Rend at Xmas party
12/31/15		\$ 23.80	new checks fee

**January 13 balance is \$2,796.21**

Christmas Party details:

**INCOME:**

Total dinners paid:	\$ 370.
Total dues paid:	\$ 790.
50/50 income	\$ 285.
Silent auction	\$ 181.

**EXPENSES:**

reimb turkey	\$ 29.14
reimb ham	\$ 19.23
buckhorn	\$ 300.00
50/50 out	\$-142.50
gift rmbrrs	\$ 31.84

subtotals \$1,626. \$ 522.71

Net Proceeds: \$1,103.29 from which we will owe National and State dues.

Membership Update/Email List - our 2016 beginning membership from Xmas party is 39 members, 16 families and 5 singles, (one family has four members). One more single membership was received at our PO Box in January. More memberships are expected at meeting Jan 13, 2016.

New members are Edward Sanchez, Amy Hartell, Dan Dockery, Lil Leclerc, Sally Hagel renewed from a couple years back, and rest of members renewed from 2015.

Draft Schedule of Service Projects spring/early summer 2016: This is my best shot at this point, but all dates could change because of weather or scheduling conflicts.

**Tuesday April 11** - One day project to clear the Little Cherry Creek trail. This trail is pretty good but there are a couple of short rocky steep sections. We will park at an area along side Highway 15 across from the Little Cherry Creek Road and go in and out on the same trail and road. The first 2.5 miles are road so there will not be any work on this section. The trail itself starts about 2.5 miles from the Highway and goes for about 2.5 miles to the junction with the CDT. I am hoping that we will have time to also do the CDT toward Black Peak. When I rode Cherry Creek last fall there was not a lot down but there are a couple of large trees that need to be removed. The work can be done with a chainsaw, so it would be good if we have a min. of about 3 people. Parking is limited so we might have to limit participation. (Silver City District)

**Thursday April 14<sup>th</sup>** – One day project to clear the Snow Creek Trail (233) and part of the Sheep Corral Trail (231) from the junction with the Snow Creek Trail to Sheep Corral Road. Total mileage of clearing would be approximately 6 miles. These trails are outside of wilderness so we would be able to use a chainsaw. The Sheep Corral road going into the trail-head is really rough and parking at the trail-head is limited so we will probably have to limit participation.

**Monday April 25<sup>th</sup> - 28** Four (possibly 5) day camp-out at Woody's Corral. The intent of this project will be to clear as much of Trail 160/162 (the Thousand Mile Ridge Trail) as far as possible and to clear the trail that goes up the Gila River from Woody's Corral to the Gila Cliff Dwellings. If time permits and we have enough people we will also clear Trail 789 and the part of Trail 160 that drop into Little Creek, and the West Fork Trail (151) to the junction with the Zig Zag Trail (28). If we have lots of help, we could also work on the E E Canyon Trail (113).

The trail between Woody's and the Cliff Dwellings is only about 1 ½ mile long and will likely need lots of brushing. It is in the river bottom with several river crossings. The area burned a few years ago and has a lot of young trees coming up. This section is outside of Wilderness. We may not be able to do this if the river is too high.

The Thousand Mile Ridge trails are within a burn area and will have lots of logs across the trail. This trail was cleared a couple of times last year but the trees from the burn are really coming down. The section that we will try to clear is about 9 miles long so I am not sure we can get the whole thing done. The trail is within the wilderness so all work will have to be done with crosscut saws and other hand tools.

Trail 789 is about ½ mile long and drops into Little Creek from the Thousand Mile Ridge Trail. It is pretty steep. There is also a short (¾) mile section of Trail 160 that drops down to Little Creek from the Thousand Mile Ridge Trail. Not sure if we can get these done but it would be nice if we can get one or both.

The section of the West Fork Trail (151) that we would like to do is about 2 miles from the Cliff Dwellings parking lot to the junction with the Zig Zag Trail (28). This trail is along the river will probably need some brushing but will likely also have some large trees across the trail. I would like to complete this trail so we can use it when we pack into the Woodland Park area in May.

The E E Canyon trail is about 2 miles long and is between the West Fork Trail and the Thousand Mile Ridge Trail. This trail is also within the burn area and will likely have lots of down trees. It is within the Wilderness so we will be using hand tools and crosscut saws.



The 11<sup>th</sup> will be a travel day to get to Woody's Corral by the Gila Cliff Dwellings National Monument. The 12<sup>th</sup> and 13<sup>th</sup> and possibly the morning of the 14<sup>th</sup> we will work on the trails and the afternoon of the 14<sup>th</sup> we will head home (unless we decide to extend another day).

**Monday May 9 and Tuesday May 10<sup>th</sup>** – Two day project to re-opening the CDT (Trail 74).

The first day, we would park at the Meadow Creek turnoff off of Highway 15 and ride into Aztec park where we would begin work on the trail going toward Black Peak. We cleared this section last year so it should not be too bad. This section is within the Signal Fire area but most of the area around the trail did not burn real hot. We will be cutting trees down across the trail. I do not think there will be much need for brushing. Since this is within the burn area, it will be dirty work so expect to get black. We will also have to be careful of hazard trees and will not do the project if it is windy. This section of trail is about 3 to 3.5 miles long. There is good parking at turnoff to Meadow Creek. This project will be chainsaw. It would be good if we have at least 3 people. There is pretty good parking at the Meadow Creek Turnoff. Since we are close to town, we will probably go home and return the next day.

The Second day, we will drive through the locked gate to the trail-head below Black Peak. There is real limited parking at this trail-head so we will need to limit this part of the project to two relatively small trailers. Three people should be able to do the work. We will cut out trees across the part of the trail from the trail-head to where we ended the day before. This section is only about 2 to 2.5 miles long and we can use a chainsaw. (Silver City District)

**May 23 through 28th, Monday through Saturday** Pack into Woodland Park and camp for 5 nights. There are over 40 miles of trail around Woodland Park so we should not have any trouble staying busy. If we have enough interest in this project, we will pack horse feed in before hand so we do not have to have as many animals standing around while we are working. I was in this area last year. It is a really nice area. Has burned but very little area were all trees were killed. The trails generally have a nice grade so it is not difficult to ride them. No work has been done to the trails for a few years so there are quite a few trees across the trails. There should be horse water and water we can filter at Woodland Park, and there is a lot of space for tents. We would go in on Monday and come out on Saturday.

Tuesday through Friday would be primary work days. It would be nice if we have 8 people that can cut with a crosscut saw on this project. That way, we could break into two groups and really get a lot done.

**Wednesday June 1st** - One day project to clear Tadpole Ridge Trail. We would try to work out a shuttle to the Sheep Corral end of the trail with horse trailers left at the Highway 15 end so we can probably only use 2 people and a pack animal on this project. The objective will be to cut the logs off the 8 miles of trail. This trail was not cleared last year but we can do the work with a chainsaw so I think it is possible to accomplish this in one day if we get an early start. We may try to do the first part (starting at Highway 15) of this toward the end of March if it does not interfere with the competitive trail ride planned at Nan Ranch in early April. Some BCH folks checked this trail out last fall and indicated that there are down trees near Highway 15. It would be nice to cut these out early since lots of people hike this section of the trail. (Silver City District)

**June 14-17, Tuesday through Friday** – Camp at Upper Gallinas Campground and work on the Railroad Canyon trail(128) the Gallinas trail(129) and the part of the Crest trail(79) between the two. These trails are within the Silver Fire area. I rode them last summer and removed logs. Not sure what the situation will be this year since there are a lot of dead trees as a result of the fire. This is a really difficult trail with narrow and rocky spots. It was very difficult to follow the trail last year.

the vegetation growth caused by the fire. Not sure we can keep this open in the long run but it is a primary access to the Aldo Leopold Wilderness from Highway 152 so I would like to try. We would camp at Upper Gallinas Campground. There are approximately 13 miles of trail to maintain if we do the whole loop. In addition to log removal, there are lots of brushing opportunities.

This is pretty ambitious (Seventy five or more miles) so I thought I would stop here for now. There are a lot more trails we can work after we complete what is listed. The Lower Rio Grande Chapter will most likely also want us to help on the CDT by Brannon Park so we may need to fit that in or substitute for one of the other projects.

## **ACTION ALERT**

### **2016 PUBLIC LAND RALLY, JANUARY 21, 2015, SANTA FE, NM**

Everyone is strongly urged to attend this year's Public Land Rally to oppose any legislation that supports or studies the sale or transfer of our public land to the State of New Mexico. This rally is open to all and will occur this Thursday, January 21, 2016 at the State Capitol in Santa Fe, NM. This event will start outside on the west side of the State Capitol at 1:30PM, then at 2:00PM, move into the State Capitol (Round House) and culminate at 3:00PM.

Money is available to car pool to this event. Each vehicle must have a minimum of 3 people. You must get prior approval from the New Mexico Wildlife Federation, Todd Leahy to get reimbursed for fuel and any other related expenses Todd agrees to. Todd's contact info is [\(505\)328-8789](tel:5053288789) cell or E-mail: [todd@nmwf.org](mailto:todd@nmwf.org) Attached is the reimbursement form for car polling. Also there may be van polls coming from all parts of the state – ask Todd for availability and to reserve your seat.

This year's Legislative session starts Jan. 19, 2016. In the interim, please contact (phone and e-mail) your state Senator and Representative as soon as possible.

To find your state senator and representative and get their contact info (phone numbers and e-mail addresses), log onto the NM Legislature web site at: [http://www.nmlegis.gov/lcs/legislator\\_search.aspx](http://www.nmlegis.gov/lcs/legislator_search.aspx)

I also suggest that you call [\(505-476-2200\)](tel:5054762200) and e-mail Gov. Susana Martinez at the following link: [http://www.governor.state.nm.us/Contact\\_the\\_Governor.aspx](http://www.governor.state.nm.us/Contact_the_Governor.aspx)

If you attend the rally, take time to go to visit your State Senators & Representative's office at the State Capitol either before or after the rally.

This year, the legislature will be in session for 30 days and we will have to react rapidly to kill bad or support good legislation. That's why I strongly recommend to contact your state representative & senator and the Governor as soon as possible (ASAP).

**PLEASE DISTRIBUTE TO ALL YOUR FRIENDS - THIS RALLY IS OPEN TO ALL**

For more information and if you want a fact sheet, contact Oscar Simpson, BCHNM – Public Land/Legislative chair at [\(505\) 917-2134](tel:5059172134) cell or E-mail: [oscarsimpson3@yahoo.com](mailto:oscarsimpson3@yahoo.com)

**REIMBURSEMENT FORM FOR JANUARY 21, 2016 - PUBLIC LANDS RALLY**

Date(s) Traveled \_\_\_\_\_

Driver of Vehicle \_\_\_\_\_

Address \_\_\_\_\_

City \_\_\_\_\_ Zip Code \_\_\_\_\_ State \_\_\_\_\_

Phone \_\_\_\_\_ E-mail \_\_\_\_\_

Passengers names who car pooled to the Public Lands Rally with driver:

A) Name \_\_\_\_\_

Address \_\_\_\_\_

City \_\_\_\_\_ Zip Code \_\_\_\_\_

Phone \_\_\_\_\_ EM \_\_\_\_\_

B) Name \_\_\_\_\_

Address \_\_\_\_\_

City \_\_\_\_\_ Zip Code \_\_\_\_\_

Phone \_\_\_\_\_ EM \_\_\_\_\_

C) Name \_\_\_\_\_

Address \_\_\_\_\_

City \_\_\_\_\_ Zip Code \_\_\_\_\_

Phone \_\_\_\_\_ EM \_\_\_\_\_

D) Name \_\_\_\_\_

Address \_\_\_\_\_

City \_\_\_\_\_ Zip Code \_\_\_\_\_

Phone \_\_\_\_\_ EM \_\_\_\_\_

E) Name \_\_\_\_\_

Address \_\_\_\_\_

City \_\_\_\_\_ Zip Code \_\_\_\_\_

Phone \_\_\_\_\_ EM \_\_\_\_\_

Total Cost of fuel: \_\_\_\_\_ Total miles driven: \_\_\_\_\_

To get reimbursed for the cost of fuel for car pooling to the Public Lands Rally at the State Capitol, you must have a minimum of 3 people and get prior approval from Todd Leahy with the NM Wildlife Federation. Todd's contact info: phone (505-299-5405) , cell (505- 328-8789) E-mail: [todd@nmwf.org](mailto:todd@nmwf.org) When your trip is over, fill out this form, attach a copy of your receipt(s) for vehicle fuel or other expenses approved by Todd for the rally and send this information to: Todd Leahy, NM Wildlife Federation, 121 Cardenas Drive NE, Alb. NM 87108.